

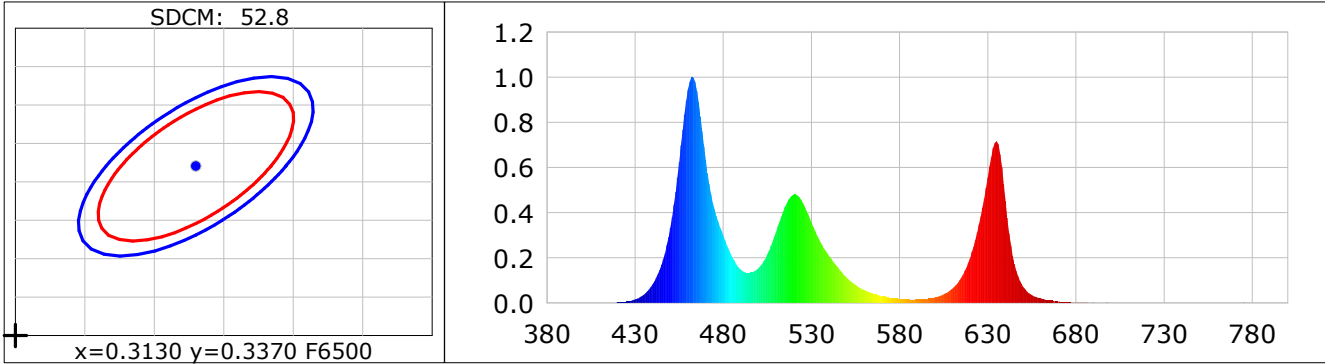
**Lightsource Test Report**

**Product Infomation**

Product Category: LED STRIP	Product Type: LED STRIP
Product Spec: IRIS 8	Product Number: 291
Manufacturer: TECSOLELED S.L.	Buyer: TECSOLELED S.L.

**CIE Colorimetric Parameters**

Chromaticity coordinates:  $x=0.2403$   $y=0.2563$   $u(u')=0.1718$   $v=0.2748$   $v'=0.4123$   
 CCT:  $T_c=31200K$  ( $duv=0.01089$ ) Color Ratio:  $R=0.195$   $G=0.686$   $B=0.119$   
 Peak Wavelength: 462.4nm Half Bandwidth: 19.5nm  
 Dominant Wavelength: 489.0nm Color Purity: 0.384  
 CRI:  $R_a=54.3$ ,  $avgR(1\sim14)=34.4$ ,  $avgR(1\sim15)=33.2$  TM30:  $R_f=57$ ,  $R_g=104$   
 GAI:  $GAI\_BB\_8=129.6$ ,  $GAI\_BB\_15=128.7$ ,  $GAI\_EES=141.0$   
 R1 =41 R2 =68 R3 =77 R4 =61 R5 =63 R6 =68 R7 =58 R8 =-1  
 R9 =-219 R10=27 R11=49 R12=64 R13=44 R14=82 R15=17  
 Color Quality Scale:  $Q_a=59.4$ ,  $Q_f=48.8$ ,  $Q_p=79.1$ ,  $Q_g=124.0$   
 Q1 =59 Q2 =74 Q3 =83 Q4 =72 Q5 =86 Q6 =91 Q7 =82 Q8 =73  
 Q9 =76 Q10=55 Q11=31 Q12=23 Q13=38 Q14=74 Q15=57



**Photometric Parameters**

Luminous Flux: 662.18 lm Efficiency: 47.80 lm/W Radiant Power: 2.963 W  
 Total mains efficacy: 44.27 lm/W Energy Efficiency Class: G (EU 2019/2015)

**Electric Parameters**

Voltage: 24.000V Current: 0.5772A Power: 13.85W  
 Power Factor: 1.0000 Frequency: 0.00Hz

**Test Infomation**

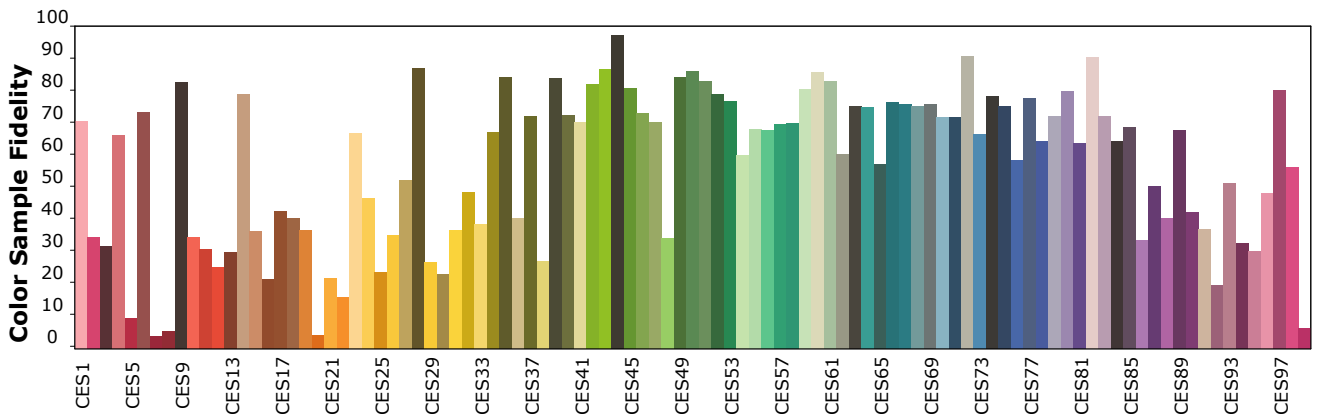
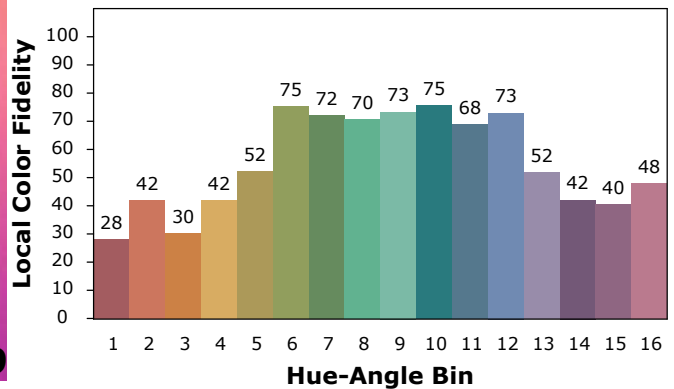
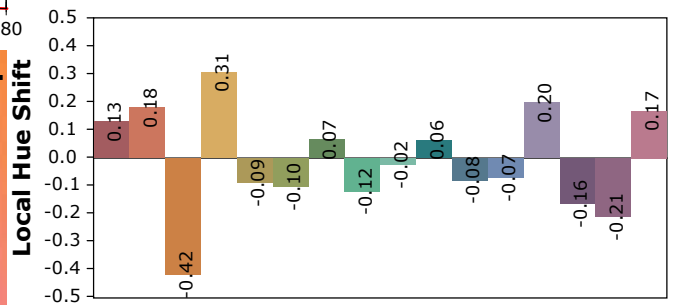
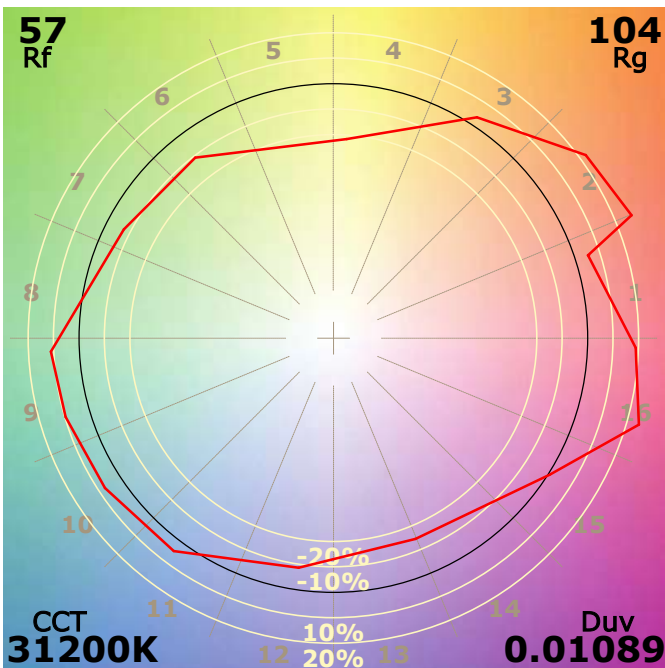
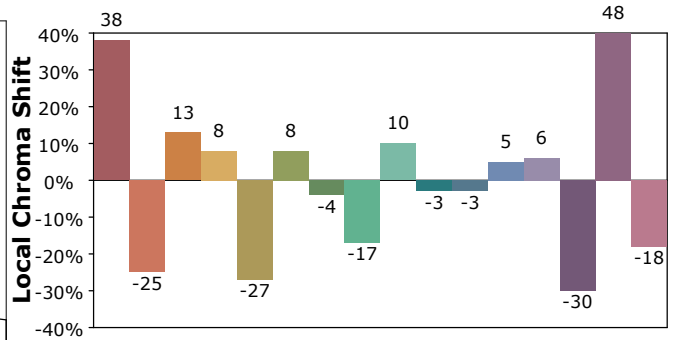
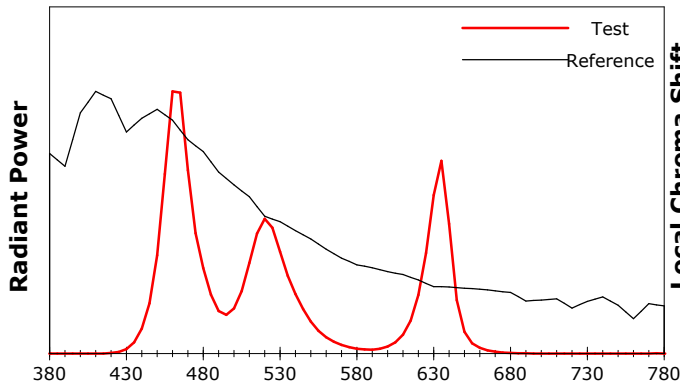
Scan Range: 380~800:1nm Photometric Method: sphere-spectroradiometer  
 Stabilization Time: 60 Sec ALC.: 1.0000 Photometric Condition: Sphere diameter: 1.50m, 4PI  
 Max of Signal: 44568 (2009) CCD Integration Time: 230.70 ms

## IES TM-30-18 Color Rendition Report

**Product Information**

Product Category: LED STRIP  
 Product Spec: 21059602440603  
 Manufacturer: TECSOLELED S.L.

Product Type: LED STRIP  
 Product Number: 291  
 Buyer: TECSOLELED S.L.



Condition: Tx:17.8°C, Ti:17.7°C, R.H.:60%  
 Test Lab: TECSOLELED S.L.  
 Operator: JORDAN GIL DIAZ

Test Device: Inventfine CMS-2S (Plus)  
 Test Time: 2021-11-02 09:15:49  
 Inspector: